

Reading, Language & The Brain

Registration Form

Name _____

Address _____

City _____

State _____ Zip _____

Phone _____

Email _____

Method of Payment

\$125 per person (Cost includes lunch and refreshments)

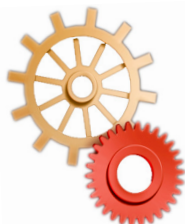
Enclosed Check

Credit Card: VISA AMEX DISC MC

Card Number: _____

Security Code: _____ Expiration: _____

Signature: _____



How to register:

Mail in this page with payment to:

Haskins Laboratories

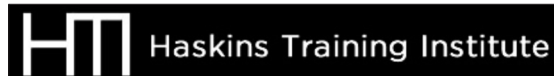
300 George St, Ste 900, New Haven, CT 06511

OR register ONLINE at

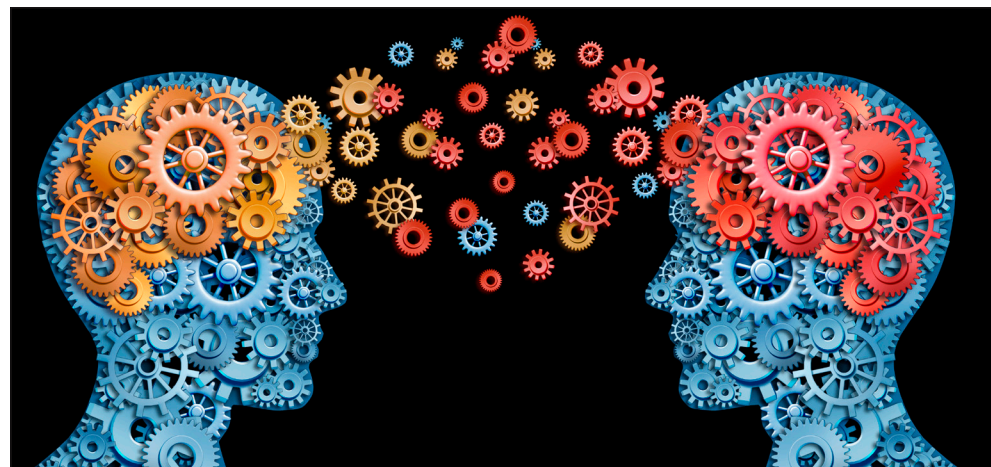
www.haskins.yale.edu/HTI/registration.htm



For more information, driving & parking directions, visit www.haskins.yale.edu



Reading, Language, & The Brain: Research, Practice & Policy



Friday, April 25, 2014

8 a.m. - 3 p.m.

(((Haskins Laboratories)))

First Floor • 300 George Street • New Haven, CT

Schedule

8:00 a.m. Light breakfast and Registration

9:00-9:45 READING RESEARCH

The Science of Reading and Its Educational Implications

Mark Seidenberg, Ph.D., Professor of Psychology at the University of Wisconsin-Madison

9:45-10:30 The Neuroscience of Reading

Ken Pugh, Ph.D., President, Haskins Laboratories

10:30-10:45 Break

10:45-noon RESEARCH TO PRACTICE

Where We Are, Where We're Headed, and Resources to Move Literacy Forward

Deborah Speece, Ph.D.

Professor and Associate Dean of Research and Faculty Development, Special Education and Disability Policy, Virginia Commonwealth University.

Formerly Commissioner of the National Center for Special Education Research, U.S. Department of Education Institute of Education Science

Peggy McCardle, Ph.D.

President, Peggy McCardle Consulting, LLC

Formerly Chief of the Child Development and Behavior Branch at the Eunice Kennedy Shriver National Institute for Child Health and Human Development at the National Institutes of Health. Dr. McCardle also directed its Language, Bilingualism, and Bilingual Program.

Noon-1:00 Lunch

1:00-1:45 Integrating Reading Research into Schools and Schools into Research

Peggy McCardle

1:45-3:00 IMPLEMENTING EFFECTIVE POLICY: ULTIMATE ACCOUNTABILITY

Margie Gillis, Ed.D., President, Literacy How and Research Affiliate, Haskins Laboratories

Ellen Cohn, Division Director, CT State Department of Education

Michael Coyne, Ph.D., Research Scientist, Center for Behavioral Education and Research, UConn

JoAnne White, Consultant, K-3 Literacy, CT State Department of Education

Elaine Zimmerman, Commissioner, CT Commission on Children

This conference is for everyone trying to reach children in the reading achievement gap

General education teachers, Reading teachers, Special education teachers, Speech and language professionals, ELL instructors, School administrators, Psychology and education students, policymakers, and parents.

In Connecticut, that gap includes 57% of 4th graders* who don't read on grade level. Some struggle to learn to read; all need our help.

Known as "SEEDS" kids, this group is comprised of: Struggling readers and learners from all socioeconomic groups, Economically disadvantaged children, English language learners, and students with Dyslexia, and Specific Learning Disabilities.

Learn from distinguished researchers, practitioners and policymakers how to be an effective and accountable partner in the collaborative process to close the reading achievement gap.



About Haskins Laboratories

Haskins Laboratories, a private, non-profit research facility founded in 1935, has focused on language factors in learning to read and on the causes of reading success and reading difficulties.

From the discovery of the importance of phoneme awareness for beginning readers—a critical breakthrough in understanding reading acquisition—to supporting initiatives to help bridge gaps between research and practice in schools, Haskins scientists have been at the forefront of reading research and its ability to inform education policy.

HTI was formed in 2011 to provide direct educational opportunities in the areas of language and literacy for educators, parents, scientists, clinicians, and students at all post-secondary levels. For decades, Haskins Laboratories has been at the forefront of scientific investigation in the areas of speech perception, speech production, and reading, as well as language disabilities, including speech-sound disorders and dyslexia. HTI serves to communicate this knowledge to the public through an array of seminars, small conferences, and intern and training positions.

*2013 National Assessment of Education Progress